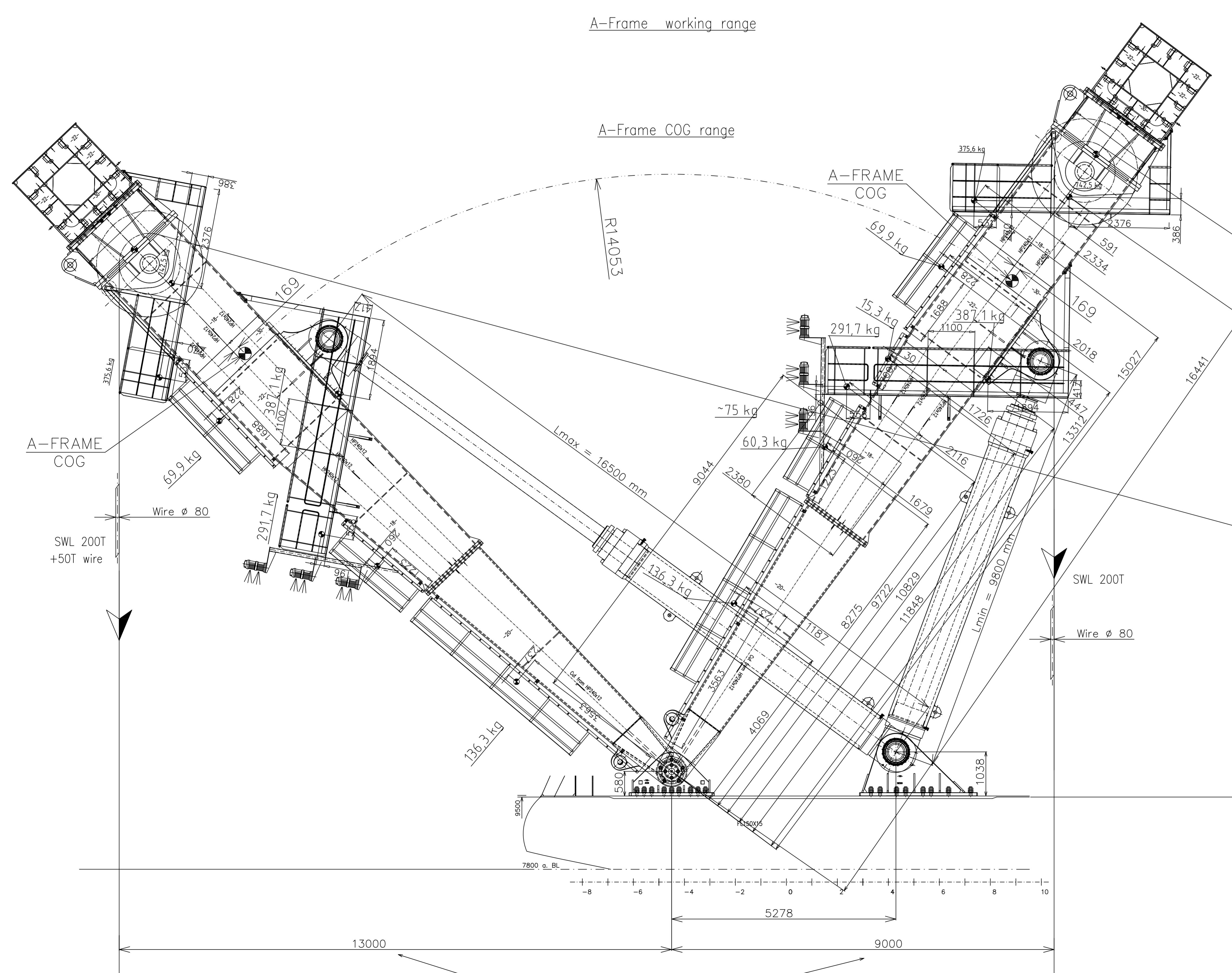
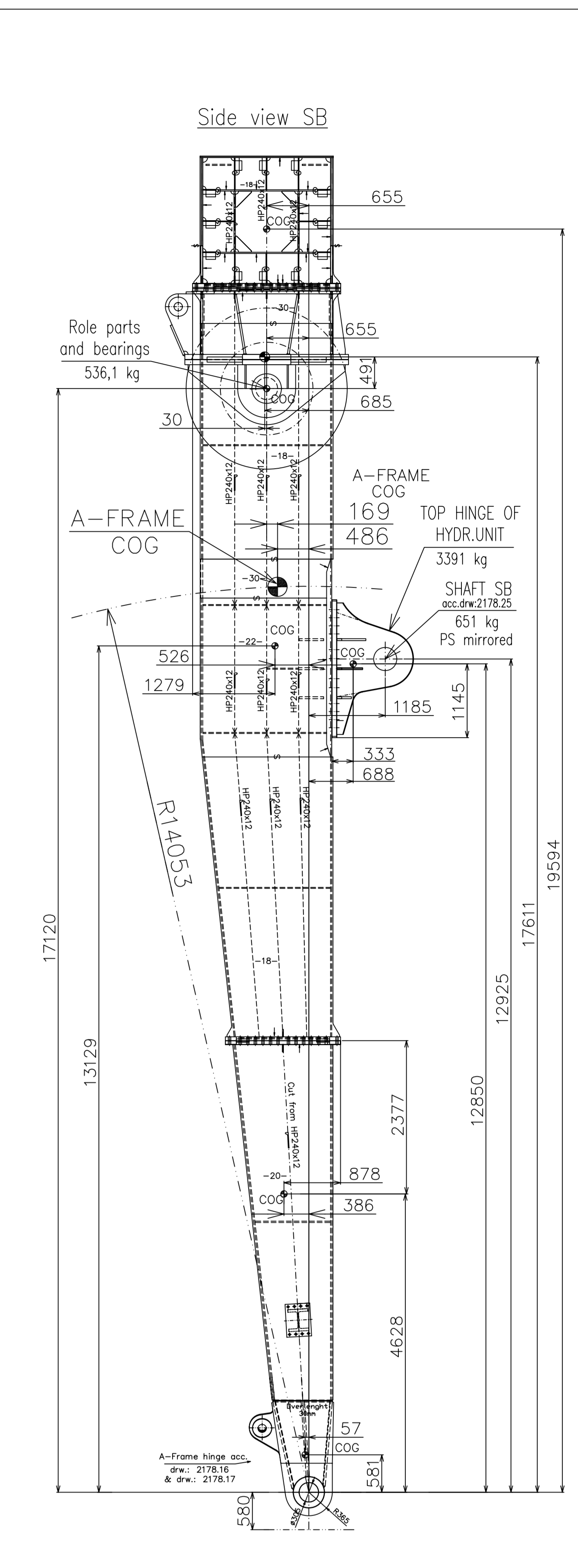
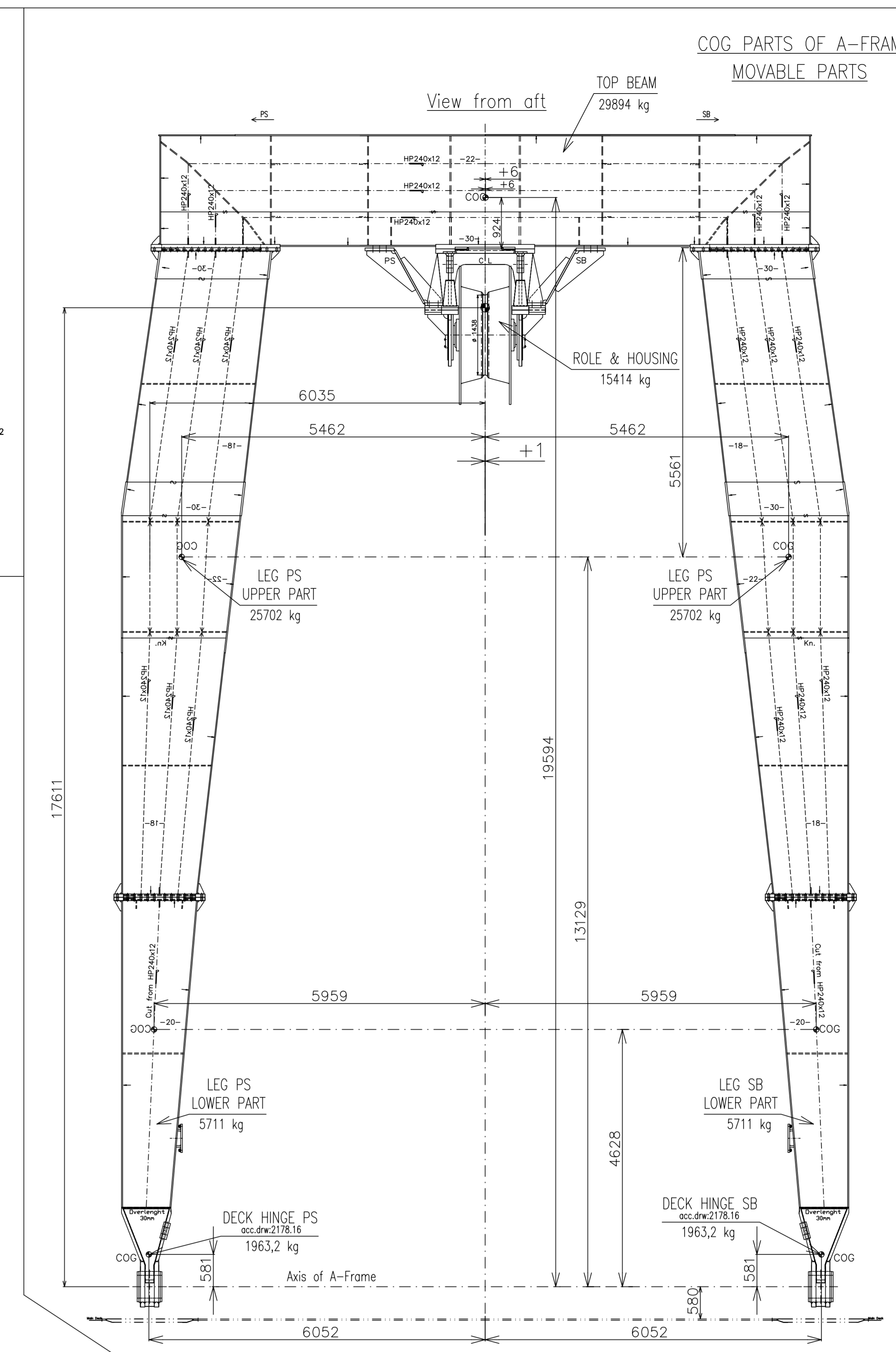


A-Frame part	Mass of part kg	xc mm	yc mm	zc mm	Mx kg.m	My kg.m	Mz kg.m
20 Deck hinge of A-Frame PS	4280	-1504	-6040	8840	-6437120	-26881200	37895200
21 Deck hinge of A-Frame SB	4280	-1504	6040	8840	-6437120	26881200	37895200
22 Deck hinge of hydraulic unit PS	5141	4142	-6040	8898	21294022	-31051640	46744618
23 Deck hinge of hydraulic unit SB	5141	4142	6040	8898	21294022	31051640	46744618
25 Shaft of hydraulic units PS&SB	1302	3778	0	9663	4918968	0	12451029
TOTAL	20144 kg	3778 mm	0 mm	84632700 mm	0 kg.m	179910662 kg.m	



A-Frame part	Mass of part kg	xc mm	yc mm	zc mm	Mx kg.m	My kg.m	Mz kg.m
1 TOP BEAM	29894	-655	0	19694	-19690570	0	598743036
2 LEG PS upper part	26702	-526	-5492	13129	-13819614	-140387047	337448103
3 LEG SB upper part	26702	-526	5492	13129	-13819614	140387047	337448103
4 LEG PS lower part	5711	-388	-5969	4628	-2204446	-34023389	36431277
5 LEG SB lower part	5711	-388	5969	4628	-2204446	34031949	36430508
6 Deck hinge PS-end of leg	1963	-57	-6062	881	-111902	-11881288	1140619
7 Deck hinge SB-end of leg	1963	-57	6062	881	-111902	11881288	1140619
8 Role & Housing	15414	-656	0	17120	-10558590	0	211455954
9 Top hinge of hydraulic unit PS	3391	688	-6035	12850	2333008	-20444685	43574550
10 Top hinge of hydraulic unit SB	3391	688	6035	12850	2333008	20444685	43574550
11 separate table	4257	-1059	0	13193	-4568163	0	56162601
12 Masts and lamps	150	-2390	0	9044	-867000	0	1356600
13 Shafts PS & SB	1302	1185	0	12825	1542870	-3715	175796667
TOTAL	125088 kg	1185 mm	0 mm	-60818110 mm	-60818110 kg.m	-3715 kg.m	175796667 kg.m

Total mass:
125088 kg (MOVABLE PARTS)
+ 20144 kg (STATIONARY PARTS)
= 145232 kg

Platforms, rails, ladders	Mass of part kg	xc mm	yc mm	zc mm	Mx kg.m	My kg.m	Mz kg.m
1 Ladder 1 PS & SB	273	-1187	0	4069	-323576	0	1169209
2 Ladder 2 PS & SB	121	-1579	0	8275	-102487	0	997965
3 Ladder 3 PS & SB	31	-1726	0	10829	-32916	0	331387
4 Ladder 4 PS & SB	140	-2018	0	13312	-282116	0	1861019
5 Upper platforms - fore parts	1485	-891	0	18441	-877835	0	24414085
6 Upper platforms - aft parts	751	-2334	0	15827	-1175301	0	11288282
7 Lower platforms - fore parts	734	417	0	11848	322841	0	8172722
8 Lower platforms - aft parts	593	-2116	0	9722	-1234474	0	5218115
TOTAL	4257 kg	0 mm	0 mm	-4403564 mm	-4403564 kg.m	0 kg.m	54847263 kg.m

REV. INDEX	Ship structure from NB 256/257 implementet.			0.11.08/W/Lgd
	REVISION NOTE			DATE / NAME
 HITZLER WERFT		 MAN Ferrostaal AG		
2007	DATE	NAME	CLIENT / PLANT	A-Frame SWL250t
DRAWN	29.08.	HW/SK	TITLE	A-Frame SWL250t - Working range and COG
CHECKED				
RELEASED				
SCALE	1:50			
ALL RIGHTS RESERVED DIN 34-1				REV. INDEX
PROPERTY OF MAN FERROSTAAL AG GERMANY TO BE RETURNED UPON REQUEST AND USED ONLY IN REFERENCE TO CONTRACT OR PROPOSALS OF THIS COMPANY. REPRODUCTION OF THE PRINT OR UNAUTHORIZED USE OF PATENTED OR PATENTABLE FEATURES DISCLOSED HEREIN IS PROHIBITED.				A
				DRW No. 2178.01 PSP No. A.2178